

TMAX 400



CODE	↔	
------	---	--

MA6385	3 m	10'	
MA6386	4 m	12'	
MA6387	4,6 m	15'	

MA6395T	4 m	12'	
MA6394T	3 m	10'	
MA6396T	4,6 m	15'	

MA6394M	3 m	10'	
MA6395M	4 m	12'	
MA6396M	4,6 m	15'	

MA6394L	3 m	10'	
MA6395L	4 m	12'	
MA6396L	4,6 m	15'	

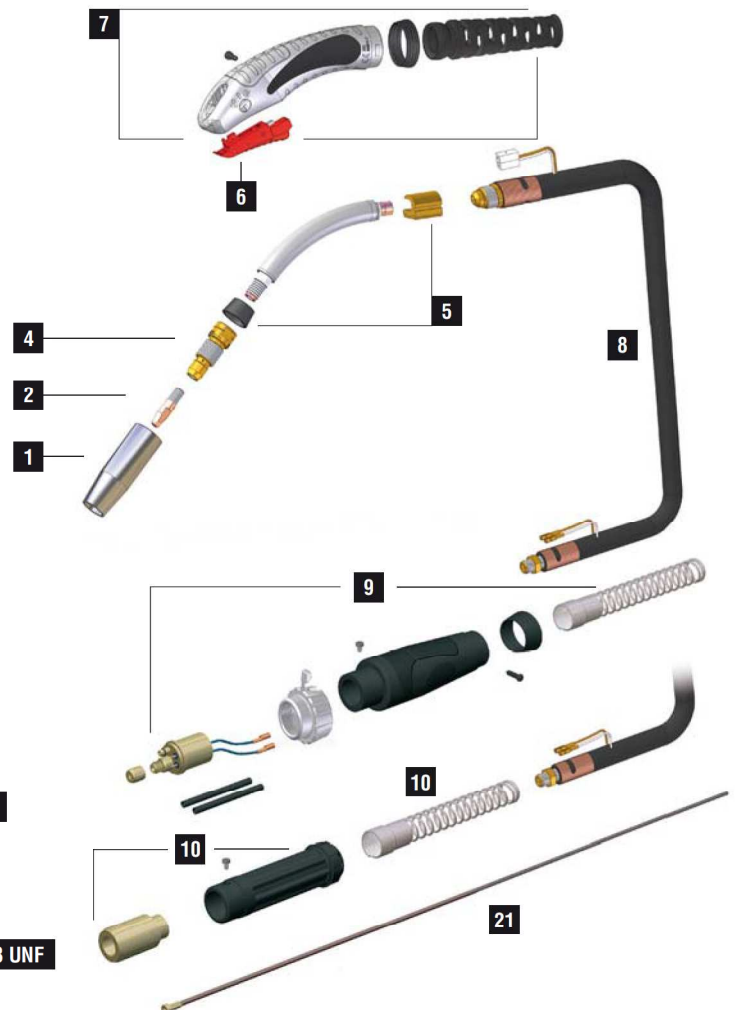
CODE	↔	
------	---	--

MA6394	3 m	10'	
MA6395	4 m	12'	
MA6396	4,6 m	15'	

+	
AR0170	Tweco® 1/4 KIT
AR0172	Lincoln® KIT
AR0173	Miller® KIT
KIT to be assembled by a qualified technician	

TECHNICAL DATA		
----------------	--	--

	1,3 kg	2.87 lb
V PEAK	113	
	0,8 ÷ 1,6 mm	.030" ÷ 1/16"
X 60%	450A CO2 - 400A Mix	



EURO

5/8-18 UNF

	CODE				Ø		REF			
1	MC0011				16 mm	5/8"	82 mm	-	5	
1	MC0012				18 mm		82 mm	-	5	
1	MC0013				20 mm		82 mm	-	5	
1	MC0298				14 mm		82 mm	-	5	
2	MD0250-78			M9X1 - CuCrZr	0,8 mm	.030"	38 mm	-	20	
2	MD0250-79			M9X1 - CuCrZr	0,9 mm	.035"	38 mm	-	20	
2	MD0250-80			M9X1 - CuCrZr	1,0 mm	.040"	38 mm	-	20	
2	MD0250-82			M9X1 - CuCrZr	1,2 mm	.045"	38 mm	-	20	
2	MD0250-84			M9X1 - CuCrZr	1,4 mm	.052"	38 mm	-	20	
2	MD0250-86			M9X1 - CuCrZr	1,6 mm	1/16"	38 mm	-	20	
2	MD0250-90			M9X1 - CuCrZr	2,0 mm	5/64"	38 mm	-	20	
2	MD0250-94			M9X1 - CuCrZr	2,4 mm	3/32"	38 mm	-	20	
4	ME0367			M9X1 - brass			51 mm	-	5	
21	GM0013			grey steel liner	1,2 ÷ 1,6 mm	.045" ÷ 1/16"	5 m	16.4'	44-116-15	1

	CODE				CODE					
5	FB0653				8	MH0475		4,6 m - 15' - 50 mm ²		
5	MF0367			mig torch head	1	9	AR0083		EURO TW	
5	MQ0340			insulator	9	9	BW0480		Euro nut	
6	BX0742			trigger	9	9	FA0027		liner nut M11X1	
7	MT0260			handle kit	9	9	MT0077		Back box kit	
8	MH0473			3 m - 10' - 50 mm ²	10	10	FB0395		5/8-18 UNF	
8	MH0474			4 m - 12' - 50 mm ²	10	10	MT0228		Back box kit 5/8-18 UNF	1

STANDARD

FOR ALL CONSUMABLES SEE PAGE 294